

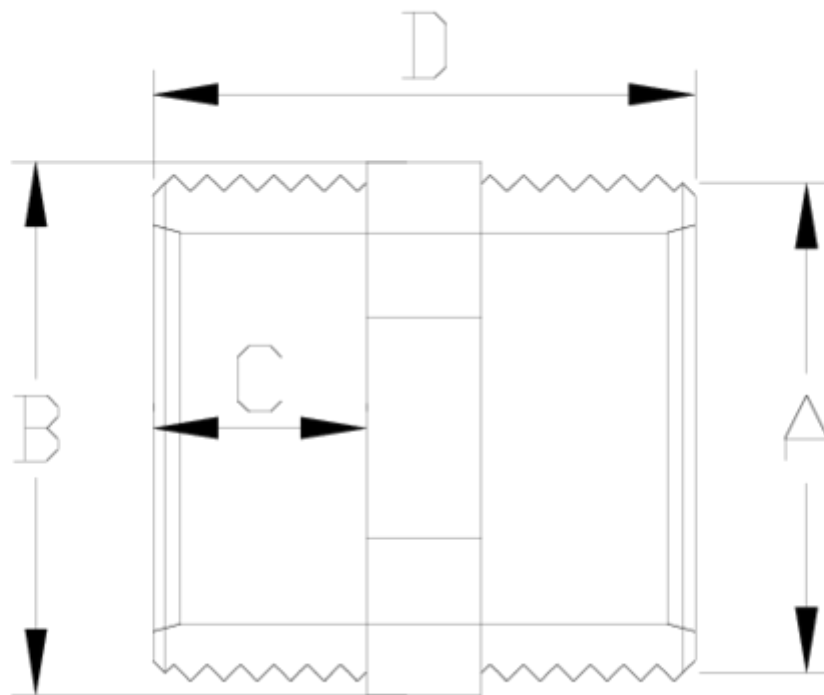


PVC pressure fittings

Male/male nipples ITEM 017

Ref.	Description	Net W.	Vol. (m ³)	Gross W.	Batch
1002401	MACHONES PVC M-M 1/2"- 1/2"	0,014	0,00892	1,56	100
1002402	MACHONES PVC M-M 3/4"-3/4"	0,020	0,00892	2,19	100
1002403	MACHONES PVC M-M 1"-1"	0,040	0,01553	4,33	100
1002404	MACHONES PVC M-M 1 1/4"-1 1/4"	0,054	0,02244	5,88	100
1002405	MACHONES PVC M-M 1 1/2"-1 1/2"	0,071	0,02244	7,54	100
1002406	MACHONES PVC M-M 2"-2"	0,125	0,02244	6,74	50
1002407	MACHONES PVC M-M 2 1/2"- 2 1/2"	0,171	0,03129	5,71	30
1002408	MACHONES PVC M-M 3"-3"	0,240	0,01553	2,89	10
1002409	MACHONES PVC M-M 4"-4"	0,410	0,01553	2,79	6





ITEM 017 | Male/male nipples

Codigo	A	Peso (g)	B	C	D	PN	ROSCA
02401	1/2"	14	29	11	40	PN10	BSP
02402	3/4"	21	34	16	44	PN10	BSP
02403	1"	37	44	19	50	PN10	BSP
02404	1 1/4"	54	50	21	55	PN10	BSP
02405	1 1/2"	71	60	22	57	PN10	BSP
02406	2"	108	70	26	65	PN10	BSP
02407	2 1/2"	175	80	31	75	PN10	BSP
02408	3"-3"	320	108	33	81	PN10	BSP
02409	4"-4"	510	135	38	91	PN10	BSP



PRODUCT DOCUMENTS



PRODUCT CERTIFICATES



COMPANY CERTIFICATES

